



## The Pharos Gazette™

Volume II, Issue III January-February 2021

### *“Thoughts on Getting Out, Part III”*

by Reverend James Cliffe, Eden Ministries

We're grateful and privileged to bring you a multi-part article by Reverend James Cliffe, whose personal experiences with incarceration, and his work to create Second Chances for others in the same shoes have given him a wealth of insight into the challenges faced by those returning home. Look forward to more words of wisdom in future editions!

#### Things to remember when the prisoner comes home:

- They will probably experience depression with resulting low energy. Do not confuse this with laziness. Allow time for healing.
- They may have difficulty making decisions, even small ones. Keep in mind, they have not been able to make decisions for some time.
- The plans and promises that they developed prior to release will not develop immediately. The temporary depression and indecision may interfere.
- They may experience flashbacks, triggered by common events at unexpected times, resulting in unusual behavior.
- They may wish to avoid crowded and/or noisy situations at stores, theaters and other heavily traveled venues. It is important to remember, they may not have experienced quiet since entering the system.
- They may crave some food items and/or may wish to avoid others. Remember, they have had no control over menu selection or preparation.

Having been spiritually bankrupt and in the dredges of alcohol and drugs himself, Rev. Jim came to a saving knowledge of the Lord Jesus Christ and his life was transformed. He began daily studies in the Word of God, was mentored by pastors, and later sought the training to become a minister himself. He went back to school and became a board-certified drug & alcohol counselor and has dedicated his energies towards helping men find the Lord through the outreach of Eden Ministries. Today the ministry owns eight homes which house men seeking help and a better way of life.



## Man's Best Friend

The dog days of summer are almost here, and there's nothing like playful puppies to bring smiles for miles! Look for our upcoming interview with Brigadoon Service Dogs, a local Washington organization dedicated to providing highly trained service animals to disabled children and veterans. And for all you artists out there, brush up on your pet portfolios—we've got a show just for furry friends in the works!



*“Don't Worry, Be Happy”*

### *Exhibition Advisory: Costa Rica!*

For all you travel-hungry Captive Artists™ out there, we've got one heck of an artistic vacation destination on the horizon! We're excited to be collaborating with our friends in Costa Rica for an international exhibition of Justice-Involved artists in 2022, in sunny San Jose. Stay tuned for more on this unique opportunity to show your work to an international audience!

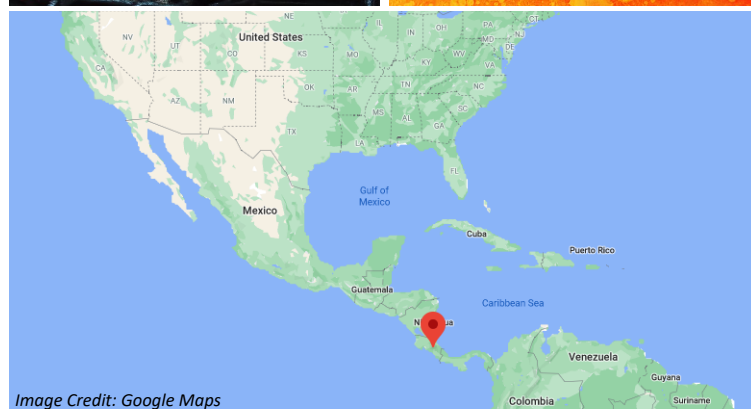
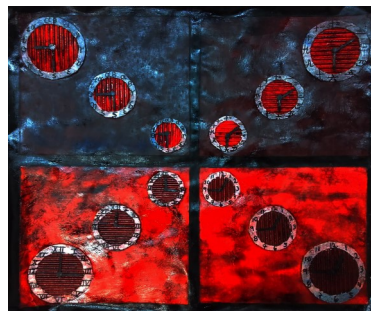


Image Credit: Google Maps

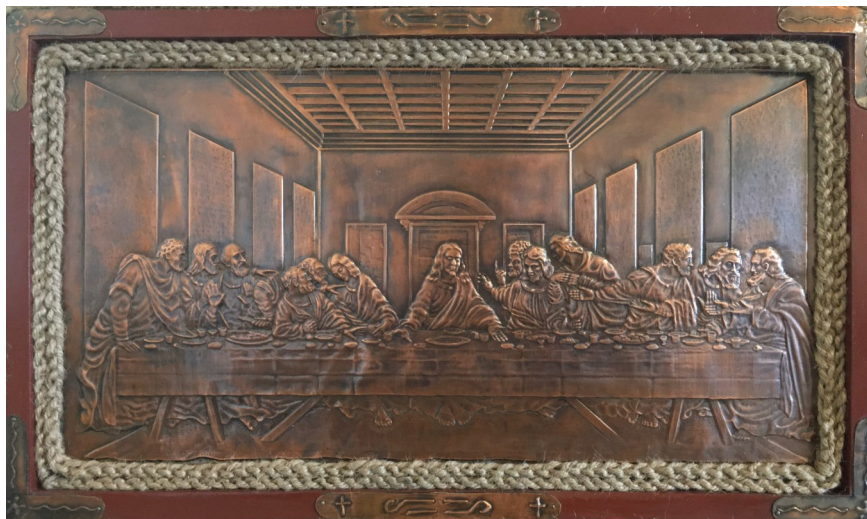




## Artist Spotlight

by Steve the Copper Smith

We recently got some powerfully good news from Steve the Copper Smith; he's been sent home on compassionate release! Steve sent us a whole new batch of his previous work, which we look forward to showcasing in upcoming exhibitions—for now, here's a sneak peak! In addition, Steve has a lot to say about keeping hope even when things look tough, the value of friends & family, Second Chances, and the tremendous power of creating art in dark places. Be on the lookout for a full interview with Steve in an upcoming issue of The Pharos Gazette—**Coming Soon!**



"The Last Supper"



"On the Range"



"The Hunter"



"The Strength of the Wolf..."



"Nutty Buddies"



"No Time Like the Open Road..."



"Songbird in Bloom"



"Wild Horses"



## “Richard”

by Greg Kennedy

*“Thicker than cell walls  
is the poetry between us.*

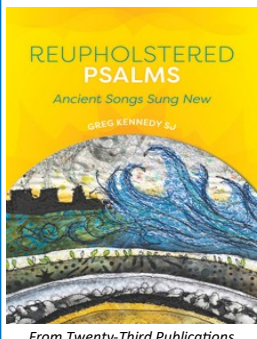
*Paler than the moon  
are the origami bats  
criss-crossing our faces  
in the night of unknowing.*

*Indelible the ink  
spot we’re always on,  
and friendly the art  
We’ve started to hang*

*On a gallows  
freshly painted sunflower  
and pounded into ploughshares.”*



Born in Hamilton, Ontario, Canada, Greg Kennedy entered the Jesuits in 2006 and was ordained a Catholic priest in 2015. Before this religious turn, he completed a PhD in philosophy, with emphasis on ecology. He began writing poetry in high school and *Reupholstered Psalms* is his first published collection. At several points in his Jesuit life, Greg has been able to engage in prison ministry. First outside of Kingston, Jamaica in 2007, where he accompanied volunteers weekly to visit inmates on a prison farm. Later, he joined the Quaker team for weekly visits to Toronto West Detention Centre. The team led brief Quaker-style meditations, followed by open conversations about topical issues. After returning from two years of study in Colombia, South America, Greg has served as a spiritual director and farm laborer at the Ignatius Jesuit Centre in Guelph, Ontario. Due to the sizable distance between Guelph and the nearest prison, Greg has not been able to minister to incarcerated populations lately. However, the retreat house where he works is about to become the residence for approximately 40 homeless people who are recovering from addiction and trauma. Greg looks forward to serving the residents in whatever ways he can.



### Interested in subscribing?

For our readers behind the walls and in the free world, we’re now pleased to offer an annual subscription! Not a reader? Consider giving a gift subscription of The Pharos Gazette to a friend or loved one who is behind the walls! Subscribe online at [www.ATouchofLight.org/pharos](http://www.ATouchofLight.org/pharos), or write us at:

ATTN: Pharos Subscription  
A Touch of Light.Org  
300 Lenora Street #311  
Seattle, WA 98121  
[pharos@ATouchofLight.org](mailto:pharos@ATouchofLight.org)



SCAN ME

- ☐ Captive Subscriber\*: \$30/year
- ☐ Digital-Only Subscriber: \$15/year
- ☐ Free World Subscriber: \$45/year
- ☐ Gift Subscription: \$45/year

\*Please note that while we DO accept First Class Forever Stamps (55 total) as a form of payment, we are not able to accept Pre-Franked envelopes. Thanks for understanding!

\*\*Please include full name, DOC # & mailing address for your gift subscription recipient

## “Noteworthy Music Man, Part I”

by Carole Cliffe

Music Man grew up in Huntington Park in Los Angeles County. He came from a Hispanic family and he had several siblings and he was one of the youngest. His father was an abusive alcoholic and would beat his mother. He was terrified as a kid and hid in his house. His dad was always at work. The dysfunction that was displayed by his father in the home was never discussed, Music Man admired his older brother who was into athletics and he wanted to be like him. All through his preteens and junior high years he longed to belong. He felt displaced, however, if only he could get into sports, he felt he would have an identity. In Jr. High he was selected to join the Jerry West Camp. It was an honor to be in that basketball program that only accepted five students from local Jr. High schools. Throughout his high school years, he got involved in basketball, football, and track and, as a California boy raised near the beach, he also enjoyed surfing. However, as fate would have it, he got accepted to Utah State College and moved East. He remembers going to try out for college basketball and he was too short. That's when he began playing the guitar in his dorm and gave up the sport's dream. While in college he met a friend, who belonged to the Mormon church. Music Man admired his friend's values, and his family life. He was impressed by how well a family could function in such a loving way and began to attend his friend's church...

Carole Cliffe graduated from California State University Northridge with a teaching credential and degree in psychology. For over 30 years, she has worked in Los Angeles County schools as a teacher, mentor, BTSA trainer, language development specialist, and character consultant, as well as consulting internationally. Carole authored and implemented T.R.A.I.N., the program which integrates character education and state standards for the language arts. As an educator and mother, she has written about strategies to integrate character values in her two books, *Building Character in the King's Kids*, and *Character Quilting*. Carole's personal spiritual journey can be found in her book, *Go, Glow and Grow*. In 2020, Carole interviewed six former prisoners and wrote up their testimonies in *Brokenness is Not a Life Sentence*. Learn more at [www.characterbuildingconcepts.com](http://www.characterbuildingconcepts.com)



Brokenness  
is Not  
a Life Sentence





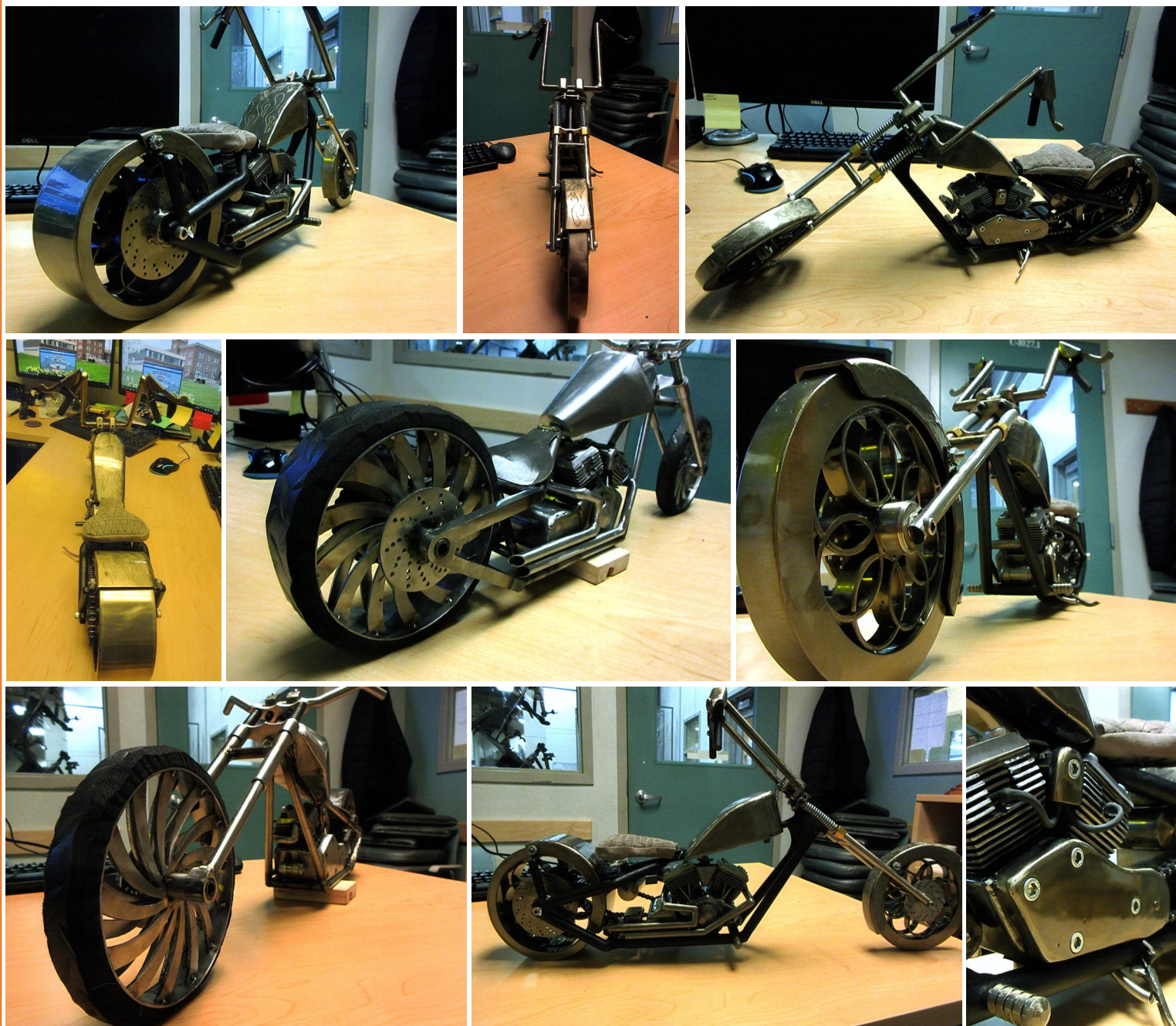


## ***"Ready for the Open Road"***

*by The Mechanic*



Every once in awhile, we come across an artist whose medium & method of expression exudes a certain "cool" factor. This edition's special shout out goes to The Mechanic, with his stunning motorcycle creations. Each of these exquisitely detailed bikes are individually handcrafted, and fully articulated—the chains turn, the wheels spin—you can practically hear the engines and smell the freedom of the open road! Thanks to his amazing craftsmanship, and his desire to give back to the community, these one-of-a-kind pieces will soon be available at [www.ATouchofLight.Org](http://www.ATouchofLight.Org), with the proceeds supporting housing opportunities for Veterans returning to the community from incarceration. ***Stay tuned for more!***



**Thanks for your support!** For those who would like to help us grow our work in the Arts around the world, we would be honored to have your financial or in-kind support! Donations by check should be made out to "A Touch of Light.Org-Shunpike" and mailed to the address below. You can also donate through our secure online portal at [www.ATouchofLight.Org/donate](http://www.ATouchofLight.Org/donate), or by scanning the QR code. For individuals or organizations interested in providing in-kind contributions, please reach out to us directly at [info@atouchoflight.org](mailto:info@atouchoflight.org).

**A Touch of Light.Org | 300 Lenora Street #311 | Seattle, WA 98121**



**SCAN ME**

**Donation Purpose:**

☐ Uganda School for the Arts

☐ 2021 Basilica of Saint Mary Exhibition

**Donation Amount:**

☐ \$10

☐ \$25

☐ \$50

☐ \$100

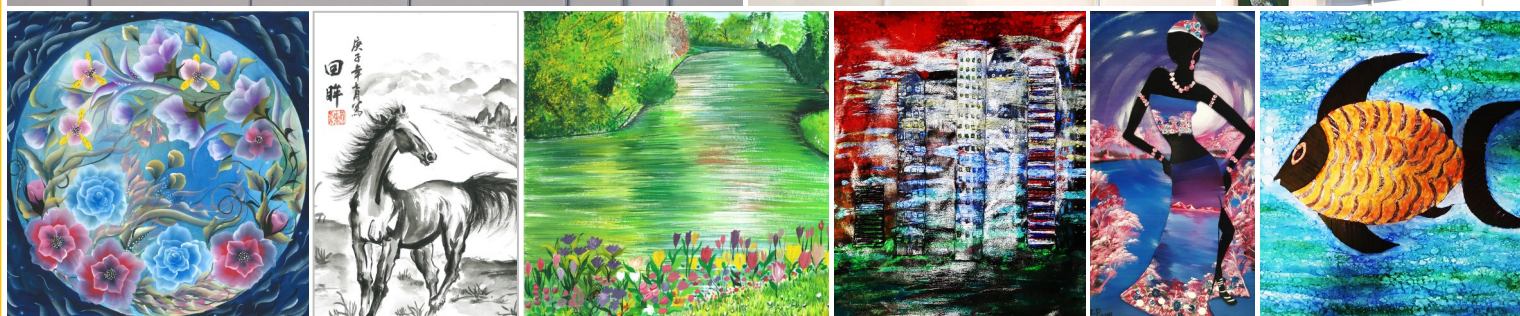
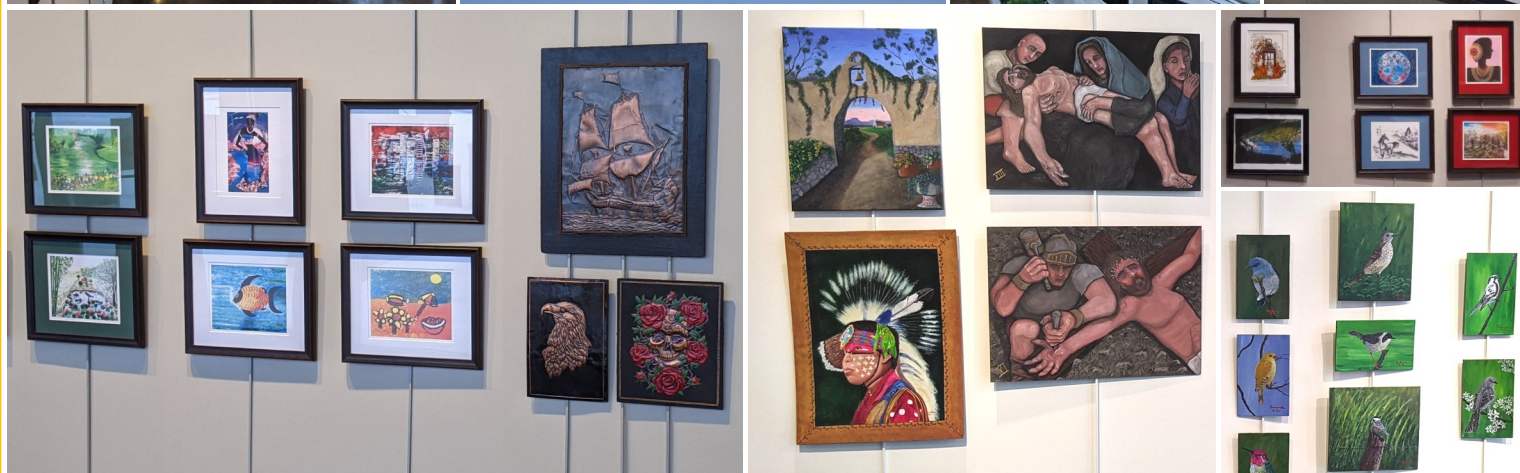
☐ \$500

☐ \$\_\_\_\_\_



## ***"Neither Snow nor Rain..."***

To everyone who contributed to **"Spring Forth"**, our February exhibition at Seattle Center, we want to give a heartfelt word of thanks! The show included works by U.S.-based Captive Artists™, as well as items sent in collaboration & artistic solidarity from Transformacion en Violentos Tiempos (Costa Rica) & the Kun Sun Association (Hong Kong). Despite inclement weather, the show went off without a hitch, and we are tremendously grateful to our collaborative partners, hosts, and the Seattle Center!



*Some samples of the exquisite work submitted by Hong Kong...*

*...and Costa Rica!*



Get your Coffee, Mugs, and more at  
**[www.DuSheas.com](http://www.DuSheas.com)**



Scan me



**Every cup of DuShea's Coffee  
supports Socially Good  
programs to enhance local  
communities and help  
provide youth development  
opportunities through the Arts.**

**Brighten a Future Today!**





*A Touch of Light.Org has a global footprint of affiliates, galleries, nonprofits, NGOs and individuals that receive The Pharos Gazette. The countries shown here are a small part of our reach—Stay tuned as we continue to grow around the world!*



A Touch of Light.org  
300 Lenora Street #311  
Seattle, WA 98121  
[www.ATouchofLight.org](http://www.ATouchofLight.org)

First-Class

Postage

*For fifteen hundred years, the Lighthouse of Alexandria (named Pharos, after the island it was built on), guided travelers safely to port. Borrowed from the Egyptian Coptic 'phareh' (guardian), in Greek, the word 'pharos' means lighthouse. Whether this publication lasts for five years or fifty, it is our aim to keep watch over the Captive Arts™, and to be a guarding and guiding light home for all those artistic sailors currently adrift on stormy seas.*

*Recipient Address*

Copyright © 2021 A Touch of Light.org | All Rights Reserved

The views expressed in The Pharos Gazette are not those of any DOC named herein.

This publication is shared with our arts affiliates around the globe, and is available in digital format at [www.ATouchofLight.org/pharos](http://www.ATouchofLight.org/pharos)